

1. Purpose of the Interim Management Plan

This Interim Management Plan identifies the area of public land attached to the NMIT Fairfield Campus which includes the AIDS Memorial Garden and which NMIT is responsible for maintaining.

Further, the Interim Management Plan describes the manner in which the area will be maintained consistent with the landscaping and plant management philosophy as understood by NMIT in 1998 when it agreed to manage the site.

2. Physical location of the Fairfield Campus Parkland

The area of public land which NMIT maintains and manages was noted in the Victorian Land (Further Revocation of Reservations) Bill 1998. Clauses 8-10 provide for the revocation of the portion of the former Fairfield Hospital site not included in the Forensic Psychiatry Institute.

The area is described as Vol. 10453 Folio 871 Parish Jika Jika. The area is surrounded by cyclone fences to the north, south and eastern boundaries with access provided via the main entrance of NMIT from Yarra Bend Road.

Within the allotment a small parcel of land has been set aside as the AIDS Memorial Garden.

Refer attachment 1: Photo/map of the area with the fences marked in and the AIDS Memorial Garden identified.

3. The AIDS Memorial Garden

The AIDS Memorial Garden was opened on 22 April 1988. The garden was developed as a place of tranquillity and respite for patients in the AIDS Ward at the Fairfield Infectious Diseases Hospital and their families and friends. (Melbourne Star Observer, 22 April 1988)

Ten years later, after the construction of the Victorian Institute of Forensic Psychiatry on part of the former Fairfield Hospital and the transfer of the remainder of the hospital site to NMIT, it was agreed that NMIT would manage the parkland areas and the AIDS Memorial Garden.

The AIDS Memorial Garden was designed around native shrubs and trees and circumscribed by Victorian-style seats. The garden was intended for the use, although not exclusively, of AIDS patients and their families.

NMIT has, as part of its occupancy of the Fairfield site, assumed responsibility for the maintenance of the AIDS Memorial Garden and the surrounding park area. An NMIT Committee of Management is established for that purpose.

4. Parkland concept

The AIDS Memorial Garden is an extension of the native grasslands and woodlands which form the banks of the Yarra River at Fairfield. The AIDS Memorial Garden was designed to be compatible with the natural environment consisting largely of native bushland and developed to enrich the mood of reflection and tranquillity that already exists there.

In keeping with this philosophy, thickets of Wallaby Grass are left to grow naturally amongst more common grasses and undergrowth. Large eucalypts and smaller, self-sown native plants are left to evolve to provide habitat for native birds and small animals.

Pathways, consisting of Lilydale toppings, have been established in the garden. The pathways wind through the area and enable access to the garden benches and minimise the danger of snakes and trip hazards for those wishing to sit in the garden area.

Formal maintenance, other than blackberry control, necessary tree management and debris removal for public safety, will be minimal to allow the bush to evolve naturally.

The area outside the AIDS Memorial Garden is used for training purposes, from time to time, at the direction of the Horticulture Head of Department. At the conclusion of training activities the area is returned to natural bushland consistent with the parkland concept.

5. Maintenance Program

The NMIT Buildings and Properties Department clear the pathways from shrub overhang, potholes and weed infestation. This occurs on a seasonal schedule developed annually and based on current and predicted weather patterns.

A dry winter might require less pruning, spraying and erosion repairs to pathways, while a wet, warm spring might mean fortnightly pruning and spraying until summer arrives.

The Manager Buildings and Properties prepares the annual maintenance schedule and forwards it to the Fairfield Campus Manager.

Monthly inspections to monitor the condition of the area, including any OH&S issues, are undertaken by the Fairfield Campus Manager and/or the Horticulture Head of Department. A condition report, based on the monthly inspections, is filed with the Campus Manager and any rectification issues are followed up in a timely manner.

Furniture and signs are maintained in good condition.

6. Access and Parking

The NMIT Campus at Fairfield is open to students, staff and visitors while classes and institute activities and events are taking place. At other times it is locked and there is on site security.

There is no public access to the AIDS Memorial Garden via the main Yarra Trails from Heidelberg Road. Access is through the NMIT Fairfield Campus. The AIDS Memorial Garden is located behind Yarra House which is a fully serviced student residence.

NMIT seeks to make the AIDS Memorial Garden as accessible as possible, through the following arrangements.

Access generally follows campus opening hours:

Monday to Thursday - 7.00am to 10.00pm
Friday - 7.00am to 4.00pm
Weekends / Public Holidays - By prior arrangement with 48 hours notice

To arrange weekend and public holiday access, contact the Campus Manager's Office on (03 92698824). Campus Security will be available to open the Campus for visitors based on negotiated times. NMIT does not guarantee weekend access but will endeavour to make provision based on reasonable and timely requests from visitors.

Vehicle Access and Parking

On weekdays visitors should advise the NMIT Gatehouse at the Main Entrance on Yarra Bend Road that they wish to visit the AIDS Memorial Garden. Visitors will be given a 'Temporary Visitor's Car Parking Permit'. The permit needs to be displayed on the dashboard of the vehicle and visitors will park in the Visitor's Car Park adjacent to The Chapel.

Visitors who have parking problems, should report them to the Campus Manager's Office (Building 'A').

On weekends, at times negotiated with the security staff, visitors will park on campus in the Visitor's Car Park adjacent to The Chapel.

The Fairfield Campus Map can be found on the NMIT website:

http://www.nmit.vic.edu.au/pdf/campuses/nmit_fairfield.pdf

7. Management Committee

The following NMIT senior staff members have responsibility for managing the area:

- Director Client Services (03 9269 1318): Liaison with community stakeholders
- Campus Manager Fairfield (03 9269 8822): Campus access, site monitoring and complaints
- Head of Department Horticulture (03 9269 8830): Advice on plantings, horticultural issues etc
- Manager Buildings and Properties (03 9269 1559): Routine gardening and maintenance of furniture and signage

The Management Committee will meet twice yearly at 11.00am at the Fairfield Campus in the Campus Manager's Office on the following dates:

- 1st Monday of September (summer preparation)
- 1st Monday of April (winter preparation)

8. Complaints and Improvements

The Fairfield Campus Manager is responsible for managing complaints and suggestions for improvements in relation to the area of public land attached to the NMIT Fairfield Campus which includes the AIDS Memorial Garden.

The Campus Manager is located in Building A at the Fairfield Campus and can be contacted on 03 9269 8822.

In the first instance, complaints about the maintenance of the AIDS Memorial Garden or suggestions for improvements should be directed to the Office of the Campus Manager. All issues raised by community members will be responded to in writing in a timely way and will be recorded on the agenda and in the meeting notes of the of Management Committee

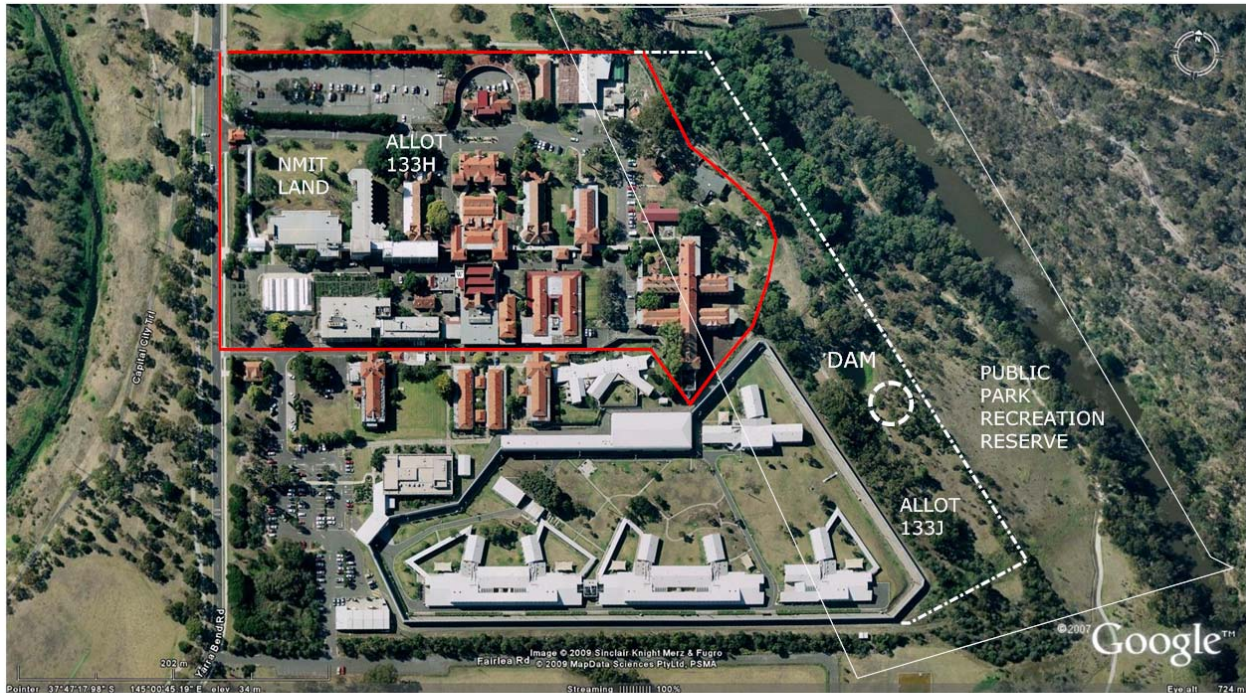
9. Action Plan

Activity	Timeframe	Responsibility
Develop annual maintenance schedule and lodge with Fairfield Campus Manager	January each year (or as required)	Manager Buildings and Properties
Maintain AIDS Memorial Garden	As per schedule	Manager Buildings and Properties
Conduct monthly inspections, log reports and rectify any problems	Monthly	Fairfield Campus Manager Horticulture HOD
Advise security staff of Fairfield Campus Parkland and AIDS Memorial Garden Interim Management Plan	As required with change of security staff	Security Coordinator Fairfield Campus Manager
Convene Management Committee meetings and provide administrative support	Twice yearly	Fairfield Campus Manager
Manage complaints and improvement suggestions	As required	Fairfield Campus Manager

Fairfield Campus Parkland and AIDS Memorial Garden Interim Management Plan



Attachment 1: Fairfield Campus Parkland and AIDS Memorial Garden



DERIVED FROM VOL 10453 FOLIO 871 PARISH JIKA JIKA

